

FACTORYCAT®

Industrial Cleaning Equipment

MICROMINI

17" - 26" Scrubbers



A COMPLETE FAMILY OF INDUSTRIAL CLEANING EQUIPMENT



KEY FEATURES



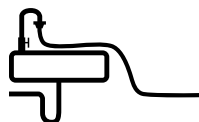
Machine Control Panel uses off-the-shelf toggle and marine duty switches and features universal icons which simplifies training.



Vacuum Muffler allows machine to consistently achieve as low as 65 dBA while thoroughly drying the floor.



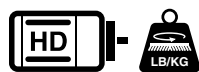
Squeegee Adjustments made simple with simple wing-nuts allows for toolless maintenance of the squeegee blade.



Front Fill System features a retractable hose for easy filling on standard sink-faucets and a stainless screen for bucket filling.



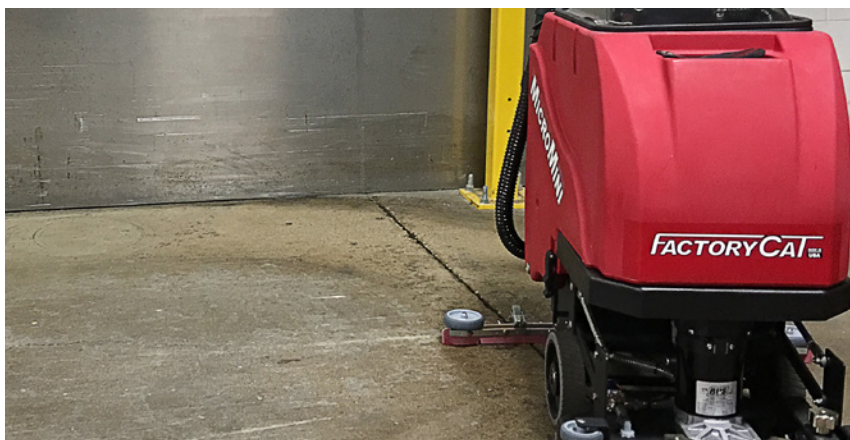
Oversized Vacuum Screen Shut-Off quickly arrests overfill issues to protect the Vacuum Motor.



High Performance motors and down pressure provides an unmatched standard of cleaning.



- Fabrication Shops
- Machine Shops
- Aviation
- Beverage Distribution
- Warehouses
- Automotive Shops
- Food Packaging
- Sports Arenas

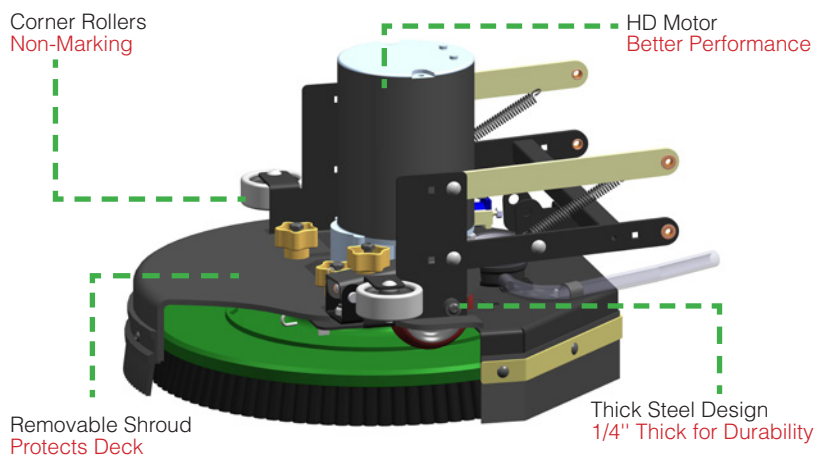
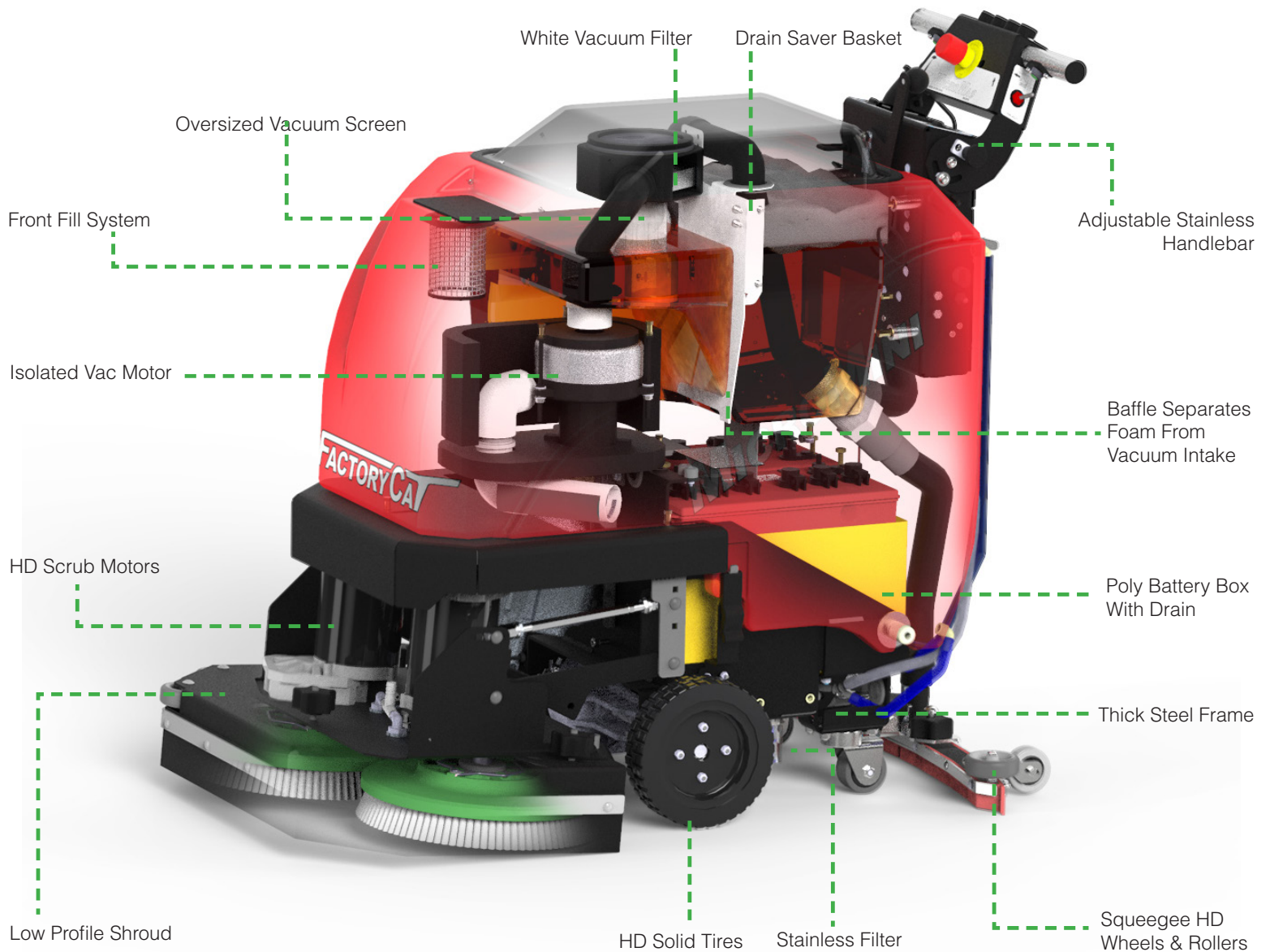


TANK TIPS FOR ACCESS

- 1 Vacuum Screen & Filter Cleaning
- 2 Service Batteries
- 3 Inspect Scrub Motors
- 4 Inspect Vacuum Motor
- 5 Inline Solution Filter
- 6 Drain Saver
Reduce costly repairs associated with clogged floor drains with our Drain Saver Basket.



VIEW INSIDE



Disk Benefits

- Brush / Pad Selection
- Lowest Maintenance Cost
- Gimballed Drivers Improves Cleaning On Irregular Floors



CALL FOR A DEMONSTRATION



☎ 800-634-4060

🌐 (+001)-262-681-3583

🌐 www.factorycat.com

Since 1986, our family owned company has been designing, building and supporting the best in floor maintenance equipment. Our **FACTORYCAT** brand services the world with unsurpassed industrial cleaning equipment, continually exceeding expectations and setting the industry bar that much higher.

We've built our reputation by providing the highest value machines and providing local support via 425 distributors in over 42 different countries.

AUTHORIZED DISTRIBUTOR

BODY CONSTRUCTION / DIMENSIONS

| | |
|----------------------------------|--|
| Tank Material: | Poly 5/16" (7.9 mm) |
| Chassis Construction: | 1/8" Steel (3.2 mm) Powder Coated Steel |
| Front Wheels (Diameter x Width): | (2x) 8" x 2" ([2x] 20.3 x 5.1 cm) - Solid Black |
| Rear Casters (Diameter x Width): | (2x) 2.5" x 1.38" ([2x] 6.4 x 3.5 cm) - Non-Marking Grey |
| Size (L x W x H): | 42" x 21" x 39" (106.7 x 53.3 x 99.1 cm) |
| Weight (w/o Batteries): | 215 - 315 lbs (97.5 - 142.9 kg) |
| Weight (w/ 130 ah Batteries): | 380 - 480 lbs (172.4 - 217.7 kg) |

BRUSH / PAD SYSTEM

| | |
|-------------------------------------|--|
| Disk Dimensions: | 17" - (1x) 17" Ø (43.2 - [1x] 43.2 cm) |
| Includes Shroud for Wall Protection | 20" - (1x) 20" Ø (50.8 - [1x] 50.8 cm) |
| | 26" - (2x) 13" Ø (66.1 - [2x] 33.1 cm) |
| Disk Motor: | 0.75 hp / 200 rpm ([1x] 559 watts) |
| Disk Brush Speed: | 200 rpm |
| Brush Down Pressure: | Up to 100 lbs (45.4 kg) / 500 lbs (226.8 kg) Actuator Rating |

POWER SYSTEM

| | |
|---|--|
| System Voltage: | 24 VDC |
| Standard Battery: | 130 ah WET |
| Optional Battery: | 150 ah WET / 115 ah AGM |
| Run Time: | Up to 3.5 Hours* |
| *Run times are based on continuous scrubbing run times. | |
| Charger: | 120VAC / 60 Hz Input - 24VDC / 12 amp Output |

DRIVE SYSTEM:

| | |
|------------------|---|
| Power: | 0.75hp - All Gear / Sealed (559 watts) & Pad Assist |
| Forward Speed: | 0 - 230 ft/min / 2.6 mph (0 - 70 m/min / 4 km/h) |
| Scrubbing Speed: | 0 - 184 ft/min / 2 mph (0 - 56 m/min / 3 km/h) |
| Reverse Speed: | 0 - 130 ft/min / 1.5 mph (0 - 40 m/min / 2 km/h) |

SOLUTION / RECOVERY SYSTEMS:

| | |
|--------------------------------------|--|
| Solution Tank Capacity: | 10 Gallons (37.9 liters) - w/ Graduated Site Tube |
| Solution Flow / Filter: | 0 - 0.5 GPM / Stainless Inline (0 - 2 LPM) |
| Recovery Tank Capacity: | 10 Gallons (37.9 liters) - 1.5" diameter Drain Hose |
| Demisting Chamber: | 1.25 Gallons (4.7 liters) |
| Drain Saver: | 30 cubic inches (491.6 cubic cm) |
| Vacuum Power: | 0.8 hp / 3 Stage (640 watts) |
| Vacuum Specs (Water Lift / Airflow): | 70" / 70 cfm (177.8 cm / 2 cm/m) |
| Squeegee: | Curved w/ 2-sided Rear Blade 17D - 30" (76.2 cm) 20D & 26D - 34" (86.4 cm) Optional - 26" & 34" (66 cm & 86.4 cm) |

GENERAL:

| | |
|-----------------|---|
| Cleaning Width: | 17", 20", 26" - Disk (43 & 50.1, 66.1 cm) |
| Sound Levels: | 65 dBA** |

**Decibel levels for Disk per ISO 11201 as recommended by the American Association of Cleaning Equipment Manufacturers & OSHA

| | |
|-----------------------------|----------------------------------|
| Productivity - Theoretical: | Up to 15,748 sqft (1,463 sqm)*** |
|-----------------------------|----------------------------------|

***Productivity is based off of ISSA 2010 Cleaning Times

| | |
|---------------------------|-------------------------------|
| Productivity - Practical: | Up to 7,308 sqft (679 sqm)*** |
|---------------------------|-------------------------------|

***Productivity is based off of ISSA 2010 Cleaning Times



Manufactured By:

R.P.S. Corporation
1711 South Street

Racine, Wisconsin 53404 (USA)

Phone: (800) 634-4060

International: (+001) 262-681-3583

www.factorycat.com

Copyright R.P.S. Corporation 2019. All rights reserved. All specifications are subject to change without notice.
FC-MICROMINI-BROCHURE (v19.056)